



# GUERIERA SPEC BUILDING 901 SKELP LEVEL ROAD DOWNINGTOWN, PA 19335

INDEX OF DRAWINGS PREPARED BY:  
Eldon R. Stoltzfus Architect

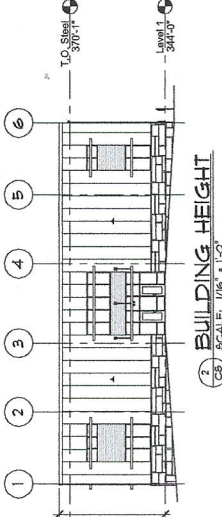


Architecture • Planning • Interior Design  
3 South Deatur Street, Staunburg, Pennsylvania 17379  
Phone: (717) 291-2828 Fax: (717) 291-9853 Email: Architect@ersarchitect.com

SHEET NUMBER	SHEET NAME
03	COVER SHEET
04	LIFE SAFETY PLAN
05	FLOOR PLAN
06	ELEVATION
07	SECTION
08	MECHANICAL DETAIL
09	WALL SECTION
10	STAIR PLAN, DETAILS
11	DOOR AND WINDOW INFORMATION
12	DOOR AND WINDOW DETAILS

JOHN RUFF, RUFF ENGINEERING

SHEET NUMBER	SHEET NAME
01	FOUNDATION PLAN DETAILS
02	STRUCTURAL DETAILS



LOCATION MAP  
NOT TO SCALE

REVISIONS:

NO.	DATE	BY	DESCRIPTION
1	12-08-2021		

JOB NO:  
**2134**

DRAWING NO:  
**CS**

## GENERAL NOTES

1. REFER TO THE CONTRACT DOCUMENTS, PERMITS, SPECIFICATIONS, APPROVALS, SUBMITTALS, INSTRUCTIONS, CONSTRUCTION CHANGE ORDERS AND CHANGE ORDERS FOR THIS PROJECT. IN THE EVENT OF A CONFLICT BETWEEN THE DRAWING SPECIFICATIONS AND THE INFORMATION PROVIDED HEREIN, THE GENERAL CONTRACTOR SHALL NOTIFY THE ARCHITECT AND NOT PROCEED UNTIL DIRECTION IS PROVIDED BY THE ARCHITECT.

2. GENERAL CONTRACTOR SHALL CAREFULLY EXAMINE THE CONTRACT DOCUMENTS, VISIT THE SITE AND CONDUCT A VISUAL SURVEY OF THE SITE AND THE EXISTING CONDITIONS OF THE SITE AND THE ADJACENT AREAS. ANY VARIANCE WITH AND MATERIALLY AFFECT THE WORK SHOWN ON THE DRAWINGS OR DESCRIBED IN THE SPECIFICATIONS, THE CONTRACTOR SHALL NOTIFY THE ARCHITECT BY A WRITTEN STATEMENT IMMEDIATELY DESCRIBING THE EXISTING CONDITIONS OF THE SITE.

3. GENERAL CONTRACTOR SHALL PROVIDE FOR THE COMPLETE CONSTRUCTION BASED ON THE CONTRACT DOCUMENTS AND SHALL BE RESPONSIBLE FOR THE PROTECTION OF ALL EXISTING UTILITIES AND SERVICES OF THE CONTRACT DOCUMENTS TO COVER AND INCLUDE UNDER EACH ITEM ALL MATERIALS, MACHINERY, APPARATUS, AND LABS NECESSARY TO PROPERLY INSTALL MATERIALS AND EQUIPMENT, ADJUST AND PUT INTO PERFECT OPERATION ON THE RESPECTIVE PORTIONS OF THE WORK AND TO FORN A COMPLETE AND CHECKING UNDER. ANY EXISTING APPARATUS, MACHINERY, OR EQUIPMENT WHICH MAY BE FOUND NECESSARY TO COMPLETE OR PERFORM ANY PORTION OF THE WORK NOTED IN A SUBMITTAL, WALKER AND IN COMPLIANCE WITH THE REQUIREMENTS STATED, SHALL BE PROTECTED AND MAINTAINED THROUGHOUT THE CONSTRUCTION PERIOD.

4. ALL WORK SHALL COMPLY WITH APPLICABLE FEDERAL, STATE AND LOCAL BUILDING CODES AND ORDINANCES AS WELL AS WITH APPLICABLE PLUMBING, MECHANICAL, AND ELECTRICAL AND RECOMMENDATIONS.

5. ALL WORK SHALL BE INSTALLED IN ACCORDANCE WITH THE MANUFACTURER'S WRITTEN INSTRUCTIONS AND RECOMMENDATIONS.

6. ALL MATERIALS USED ON THE PROJECT SHALL BE LISTED, OR IF REQUIRED BY THE OWNER'S REQUIREMENTS, SHALL BE APPROVED BY THE ARCHITECT. THE ARCHITECT'S APPROVAL DOES NOT CONSTITUTE A WARRANTY OR GUARANTEE OF THE QUALITY OF THE WORK OR THE PERFORMANCE OF THE WORK.

7. ANY NEW EQUIPMENT OR CONSTRUCTION WHICH REQUIRES OVERHEAD SUPPORT OR SUBSTRATION, NOT INCLUDING LIGHTBRIGHT SURFACED ACROBATH CEILING SYSTEMS, ELECTRICAL CONDUITS OR SHEET METAL DUCTWORK SHALL BE SUPPORTED FROM THE TOP CHORD OF JOISTS OR TRUSSES AT THREE HUNDRED FIFTY POUNDS (350 LBS.) AND SHALL BE SUPPORTED FROM THE STRUCTURE ABOVE. REARER SPECIFIC DIRECTION FROM THE DESIGN PROFESSIONAL PRIOR TO INSTALLATION BY THE GENERAL CONTRACTOR. UNDER NO CIRCUMSTANCES SHALL ANY NEW PENETRATIONS BE MADE AT THE INTERSECTIONS OF THE ROOF DECK FOR THE ATTACHMENT OF ANY NEW CONSTRUCTION.

8. ALL NEW PENETRATIONS SHALL BE MADE IN ACCORDANCE WITH THE MANUFACTURER'S WRITTEN INSTRUCTIONS AND SHALL BE MADE IN ACCORDANCE WITH THE MANUFACTURER'S WRITTEN INSTRUCTIONS TO MATCH ADJACENT SURFACES.

9. THE GENERAL CONTRACTOR SHALL BE RESPONSIBLE FOR ALL FINISH WORK AND ALL FINAL PLUMBING AND ELECTRICAL CONNECTIONS OF ANY EQUIPMENT UNLESS OTHERWISE SPECIFICALLY NOTED OTHERWISE.

10. PRIOR TO PLACEMENT OF THE NEW CONCRETE & REBAR, THE CONTRACTOR SHALL REVIEW THE EXISTING CONDITIONS AND MAKE THE REQUIRED ADJUSTMENTS IN THE 3" ONE SUBSTRATE AND RIGID INSULATION AS REQUIRED BY THE CONTRACT DOCUMENTS.

11. PROVIDE BLOCKING IN WALLS, CEILING, ETC. AS REQUIRED TO SUPPORT WALL-MOUNTED AND CEILING-MOUNTED EQUIPMENT INCLUDING, BUT NOT LIMITED TO, EQUIPMENT, TOILET ACCESSORIES, LIGHT FIXTURES, ETC.

12. CONTRACTOR SHALL VERIFY FUNCTION OF LOCKERS WITH OWNER'S REPRESENTATIVE PRIOR TO RELASING LOCKERS FOR FABRICATION.

13. PORTABLE FIRE EXTINGUISHERS: REQUIRED (IBC SECTION 903)

14. MINIMUM SIZE: AS REQUIRED BY SPECIFIC USE

15. MAXIMUM FLOOR AREA PER UNIT OF A: 1,500 SQUARE FEET

16. MAXIMUM FLOOR AREA PER EXTINGUISHER: 1,125 SQUARE FEET

17. BASIC MINIMUM EXTINGUISHER RATING BASED ON UNITS OF 3: 20B

18. MAXIMUM TRAVEL DISTANCE: FIFTY FEET (50 FT), 20B

19. MAXIMUM NUMBER OF EXTINGUISHERS: SEE LIFE SAFETY PLAN

20. REFER TO LIFE SAFETY PLAN FOR LOCATIONS OF PORTABLE FIRE EXTINGUISHERS. FIRE EXTINGUISHER CABINETS IN THE RATED PARTITION ASSEMBLIES SHALL BE FIRE RATED CABINETS.

21. FIRE ALARM SYSTEMS/SMOKE DETECTION SYSTEMS (NOT REQUIRED) (IBC SECTION 907.4)

22. MEANS OF EGRESS: TO BE DETERMINED

23. MEANS OF EGRESS SIGNS: (IBC 1005.12)

24. MAXIMUM WALKWAY CORRIDOR WIDTH WITH SPRINKLER SYSTEM: 5 FT. (IBC SECTION 1004.4)

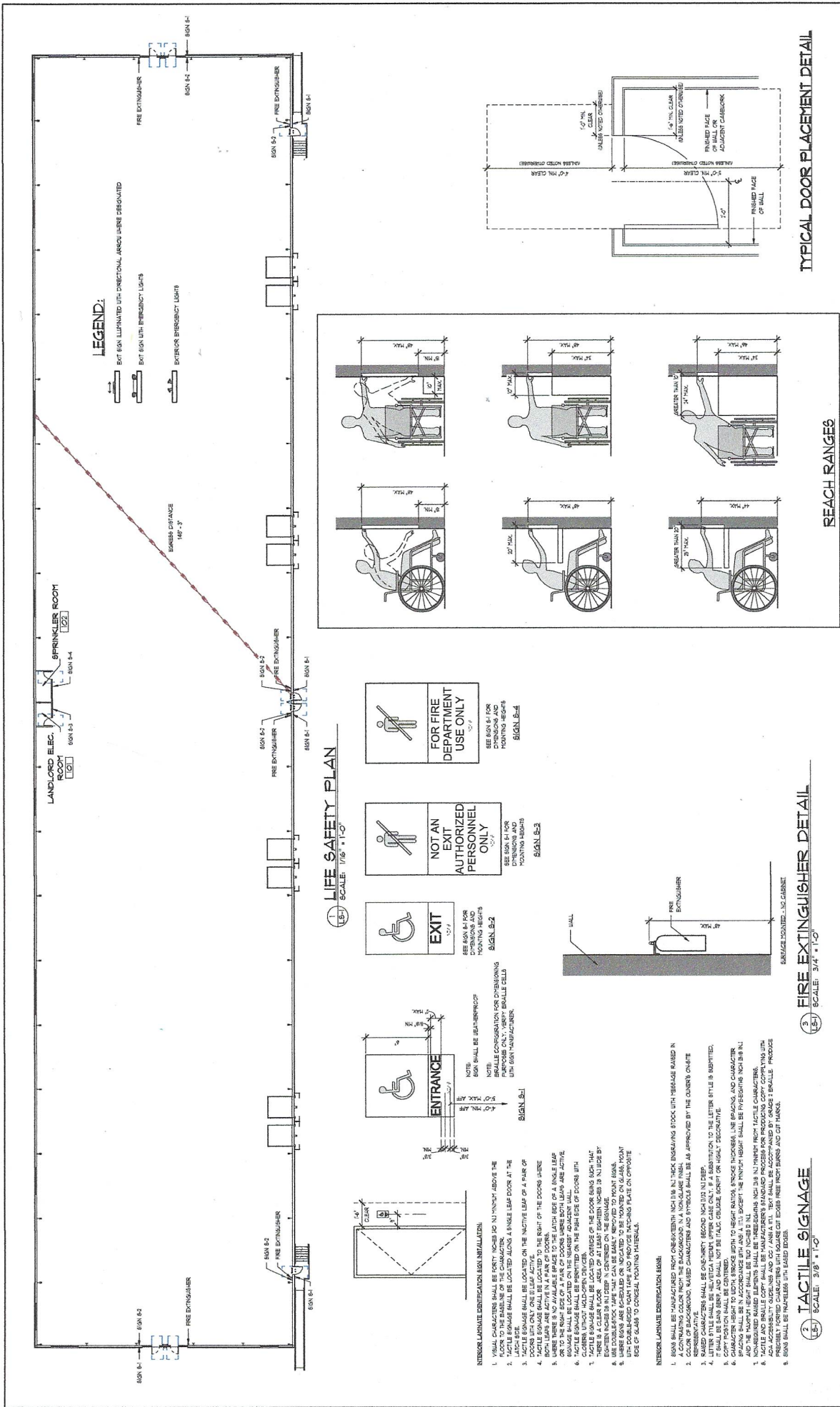
25. DOORS

26. DOORS SHALL HAVE A MINIMUM CLEAR WIDTH OF NOT LESS THAN THIRTY-TWO (32) INCHES MEASURED BETWEEN THE TOP EDGES OF THE DOORS WITH THE DOORS OPENED TO THE FULL OPENING. DOORS WHERE THERE ARE FINISHES OF FLOOR ONE (1) INCH SHALL MEET THIS REQUIREMENT. FINISHES NOT TO EXCEED 1/4" TO 3/4" OR MORE (IBC PARAGRAPH 1008.1.1)

27. DOORS SHALL SWING IN THE DIRECTION OF EGRESS TRAVEL WHERE SERVING AN OCCUPANT LOAD OF FIFTY (50) OR MORE (IBC PARAGRAPH 1008.1.2)

28. REQUIRED PLUMBING FIXTURES: TO BE DETERMINED

29. ACCESSIBILITY: FULLY COMPLIANT, INCLUDING, BUT NOT LIMITED TO, MEANS OF ENTRY; MEANS OF EGRESS; STAIRS; CLOSETWORK; STORAGE; AND TOILET FACILITIES.



**LEGEND:**  
 EXIT SIGN ILLUMINATED WITH DIRECTIONAL ARROW WHERE DESIGNATED  
 EXIT SIGN WITH EMERGENCY LIGHTS  
 EXTERIOR EMERGENCY LIGHTS

**LIFE SAFETY PLAN**  
 SCALE: 1/8" = 1'-0"

**EXIT**  
 SEE SIGN S1 FOR DIMENSIONS AND MOUNTING HEIGHTS  
 SIGN S-2

**NOT AN EXIT AUTHORIZED PERSONNEL ONLY**  
 SEE SIGN S1 FOR DIMENSIONS AND MOUNTING HEIGHTS  
 SIGN S-3

**FOR FIRE DEPARTMENT USE ONLY**  
 SEE SIGN S1 FOR DIMENSIONS AND MOUNTING HEIGHTS  
 SIGN S-4

- INTERIOR LAMPING IDENTIFICATION SIGN INSTALLATION:**
1. VISUAL CHARACTERS SHALL BE FORTY INCHES OR NINETY ABOVE THE FINISH FLOOR SURFACE.
  2. TACTILE CHARACTERS SHALL BE LOCATED ALONG A SINGLE LEAF FLOOR AT THE LATCH SIDE.
  3. TACTILE CHARACTERS SHALL BE LOCATED ALONG A SINGLE LEAF FLOOR AT THE DOOR SIDE ONLY ONE LEAF IS ACTIVE ON THE ACTIVE LEAF OF A PAIR OF DOORS.
  4. TACTILE SIGNAGE SHALL BE LOCATED TO THE RIGHT OF THE DOORS WHERE OR TO THE RIGHT SIDE OF A PAIR OF DOORS WHERE BOTH LEAFS ARE ACTIVE.
  5. WHERE THERE IS NO AVAILABLE SPACE TO THE LATCH SIDE OF A SINGLE LEAF OR TO THE RIGHT SIDE OF A PAIR OF DOORS, WHERE BOTH LEAFS ARE ACTIVE, TACTILE SIGNAGE SHALL BE MOUNTED ON THE FINISH SIDE OF DOORS WITH CHARACTERS WITHOUT HOLLOW-OPEN CHARACTERS.
  6. CHARACTERS SHALL BE MOUNTED ON THE COVERS, BEING MADE OF MATTER NOT LESS THAN 1/8" DEEP, IN CENTERED ON THE SIGNAGE.
  7. WHERE SIGNAGE IS MOUNTED ON THE COVERS, THERE SHALL BE A CLEAR FLOOR AREA OF AT LEAST EIGHTEEN INCHES IN WIDTH BY EIGHTEEN INCHES IN DEPTH IN CENTERED ON THE SIGNAGE.
  8. WHERE SIGNAGE IS MOUNTED ON THE COVERS, THERE SHALL BE A CLEAR FLOOR AREA OF AT LEAST EIGHTEEN INCHES IN WIDTH BY EIGHTEEN INCHES IN DEPTH IN CENTERED ON THE SIGNAGE.
  9. WHERE SIGNAGE IS MOUNTED ON THE COVERS, THERE SHALL BE A CLEAR FLOOR AREA OF AT LEAST EIGHTEEN INCHES IN WIDTH BY EIGHTEEN INCHES IN DEPTH IN CENTERED ON THE SIGNAGE.
  10. WHERE SIGNAGE IS MOUNTED ON THE COVERS, THERE SHALL BE A CLEAR FLOOR AREA OF AT LEAST EIGHTEEN INCHES IN WIDTH BY EIGHTEEN INCHES IN DEPTH IN CENTERED ON THE SIGNAGE.

- INTERIOR LAMPING IDENTIFICATION SIGN:**
1. SIGN SHALL BE MANUFACTURED FROM ONE-SIDED, NOT LESS THAN 1/8" THICK ENAMELING STOCK WITH 1/16" RISES BASED IN REPRESENTATIVE CHARACTER AND SYMBOL SHALL BE AS APPROVED BY THE OWNER'S ON-SITE REPRESENTATIVE.
  2. COLOR OF BACKGROUND, BASED CHARACTERS AND SYMBOL SHALL BE AS APPROVED BY THE OWNER'S ON-SITE REPRESENTATIVE.
  3. LETTER STYLE SHALL BE SANS SERIF AND SHALL NOT BE ITALIC, CURLIE, SCRIPT OR HIGHLY DECORATIVE.
  4. LETTER STYLE SHALL BE THE VERTICAL MEDIUM UPPER CASE ONLY, IF A SUBSTITUTION TO THE LETTER STYLE IS SUBMITTED, IT SHALL BE SANS SERIF AND SHALL NOT BE ITALIC, CURLIE, SCRIPT OR HIGHLY DECORATIVE.
  5. CHARACTER HEIGHT TO WIDTH RATIO SHALL BE APPROXIMATELY 1:1.5 TO 1:2.0.
  6. CHARACTER HEIGHT TO WIDTH RATIO SHALL BE APPROXIMATELY 1:1.5 TO 1:2.0.
  7. CHARACTER HEIGHT TO WIDTH RATIO SHALL BE APPROXIMATELY 1:1.5 TO 1:2.0.
  8. CHARACTER HEIGHT TO WIDTH RATIO SHALL BE APPROXIMATELY 1:1.5 TO 1:2.0.
  9. CHARACTER HEIGHT TO WIDTH RATIO SHALL BE APPROXIMATELY 1:1.5 TO 1:2.0.
  10. CHARACTER HEIGHT TO WIDTH RATIO SHALL BE APPROXIMATELY 1:1.5 TO 1:2.0.

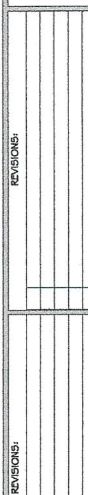
**TACTILE SIGNAGE**  
 SCALE: 3/8" = 1'-0"

**FIRE EXTINGUISHER DETAIL**  
 SCALE: 3/4" = 1'-0"

**REACH RANGES**

**TYPICAL DOOR PLACEMENT DETAIL**

REVISIONS:

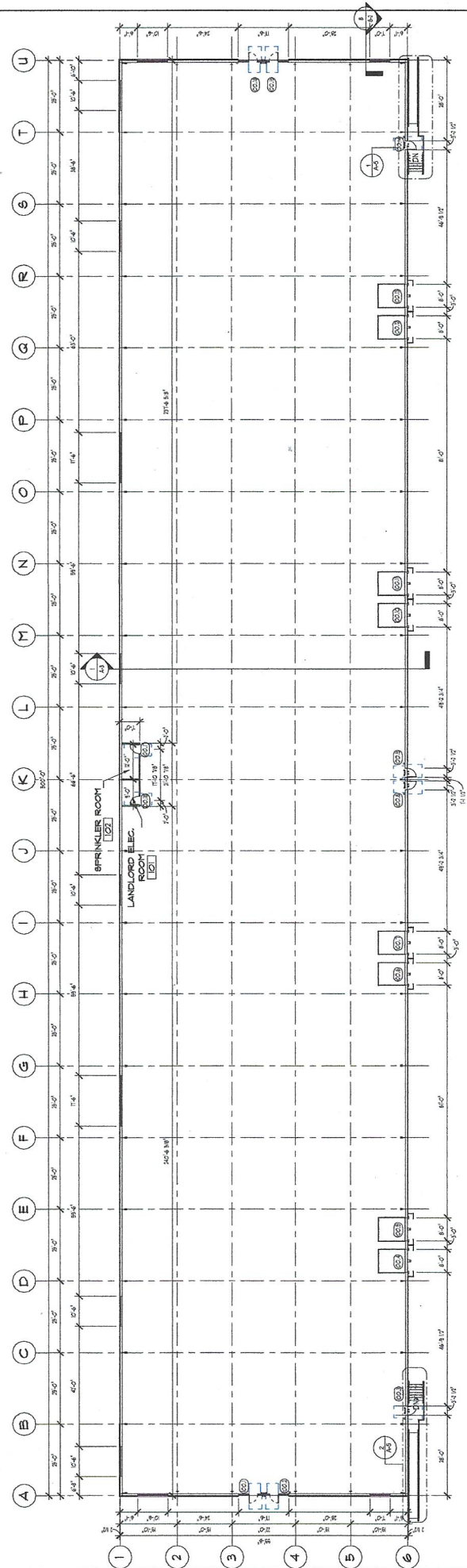
**Eldon R. Stoltzfus Architect**  
 Architecture Planning Interior Design  
 2 South Decatur Street Straburg, Pa. 17579  
 Phone: (717) 291-5928 Fax: (717) 291-5923 Email: Architect@ersarchitect.com

**LIFE SAFETY PLAN**  
**GUERIERA SPEC BUILDING**  
 901 SKELF LEVEL ROAD  
 DOWNINGTOWN, PA. 19335

JOB NO: 2134  
 DRAWING NO: LS-1

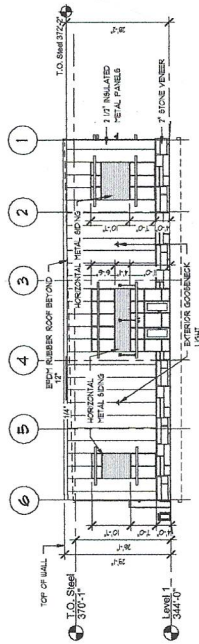
THIS DRAWING IS AN INSTRUMENT OF SERVICE TO THE ARCHITECT AND MAY NOT BE REPRODUCED WITHOUT HIS PERMISSION AND UNLESS THE REPRODUCTION CARRIES HIS NAME AS THE ARCHITECT.

THE CONTRACTOR SHALL CHECK CONDITIONS IN PLACE AND MAKE ALL NECESSARY ADJUSTMENTS BEFORE BEGINNING WORK.

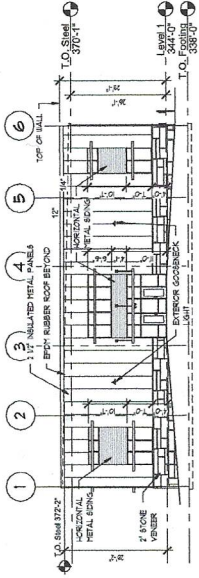


**FLOOR PLAN**  
 SCALE: 1/8" = 1'-0"  
 AREA: 80,000 S.F.

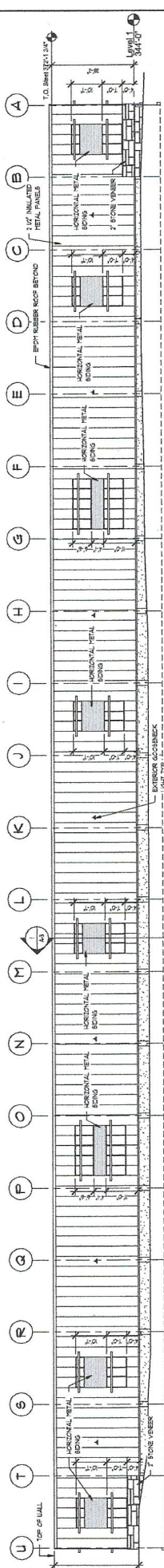
<b>FLOOR PLAN</b> <b>GUERIERA SPEC BUILDING</b> 901 SKEPP LEVEL ROAD DOWNTOWN, PA 19395		JOB NO: <b>2134</b>	DRAWING NO: <b>A-1</b>												
<b>Eldon R. Stoltzfus Architect</b> Architecture Planning Interior Design 2 South Decatur Street Shaburg, Pa 17579 Phone: (717) 291-5928 Fax: (717) 291-5953 Email: Architect@ersarchitect.com		PROJECT PHASE: PERMITTING DATE NOTED: 12.02.2023	THE CONTRACTOR SHALL AND OBTAIN ALL NECESSARY NECESSARY PERMITS BEFORE BEGINNING WORK												
THIS DRAWING AS AN INSTRUMENT OF SERVICE IS THE PROPERTY OF THE ARCHITECT AND MAY NOT BE REPRODUCED WITHOUT HIS PERMISSION AND UNLESS THE REPRODUCTION CARRIES HIS NAME AS THE ARCHITECT.		<b>REVISIONS:</b> <table border="1"> <tr><td> </td><td> </td><td> </td></tr> <tr><td> </td><td> </td><td> </td></tr> <tr><td> </td><td> </td><td> </td></tr> <tr><td> </td><td> </td><td> </td></tr> </table>													



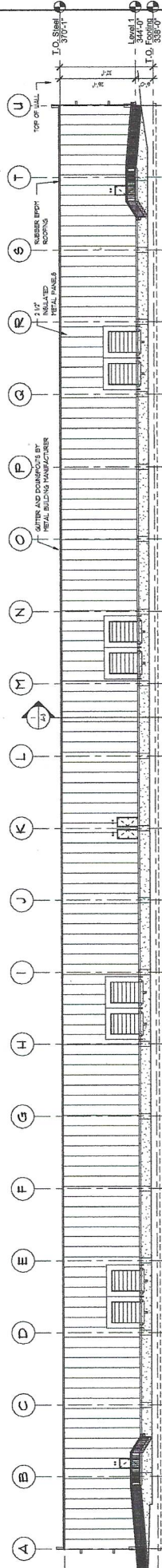
1 EAST ELEVATION  
SCALE: 1/16" = 1'-0"



2 WEST ELEVATION  
SCALE: 1/16" = 1'-0"



3 NORTH ELEVATION  
SCALE: 1/16" = 1'-0"



4 SOUTH ELEVATION  
SCALE: 1/16" = 1'-0"

REVISIONS:


REVISIONS:




**Eldon R. Stoltzfus Architect**  
 Architecture Planning Interior Design  
 2 South Decatur Street Shrewsbury, Pa 17379  
 Phone: (717) 291-9993 Fax: (717) 291-9993 Email: Architect@mararchitect.com

THE CONTRACTOR SHALL BE RESPONSIBLE FOR OBTAINING ALL NECESSARY PERMITS AND APPROVALS BEFORE BEGINNING WORK.

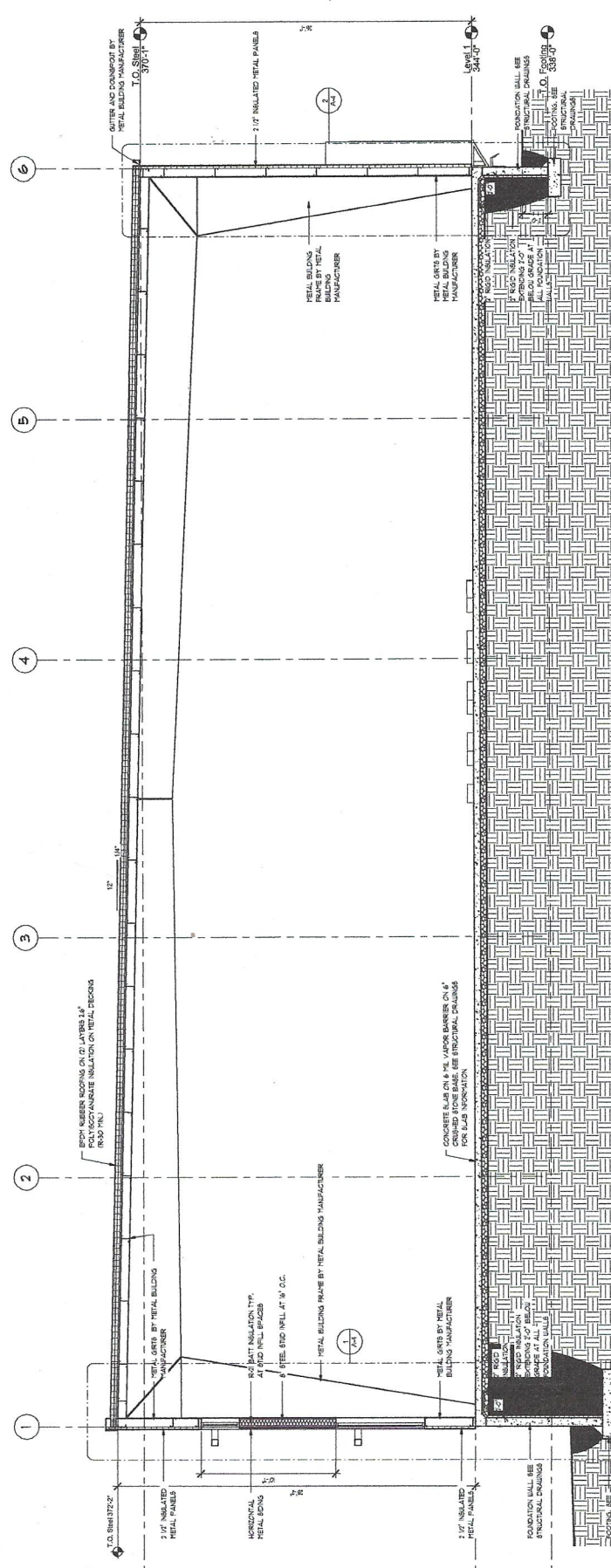
**ELEVATIONS**  
**GUERIERA SPEC BUILDING**  
 901 SHELPE LEVEL ROAD  
 DOWNTOWN, PA 19335

JOB NO: **2134**  
 DRAWING NO: **A-2**

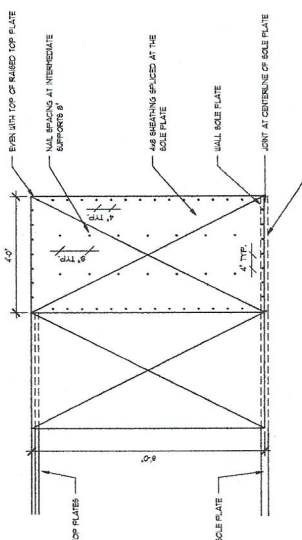
PROJECT PHASE: PERMITTING  
 DATE NOTED: 12-02-2021

DRAWN BY: E.R.P.  
 DATE NOTED: 12-02-2021

THIS DRAWING AS AN INSTRUMENT OF SERVICE IS THE PROPERTY OF THE ARCHITECT AND MAY NOT BE REPRODUCED WITHOUT HIS PERMISSION AND UNLESS THE REPRODUCTION CARRIES HIS NAME AS THE ARCHITECT

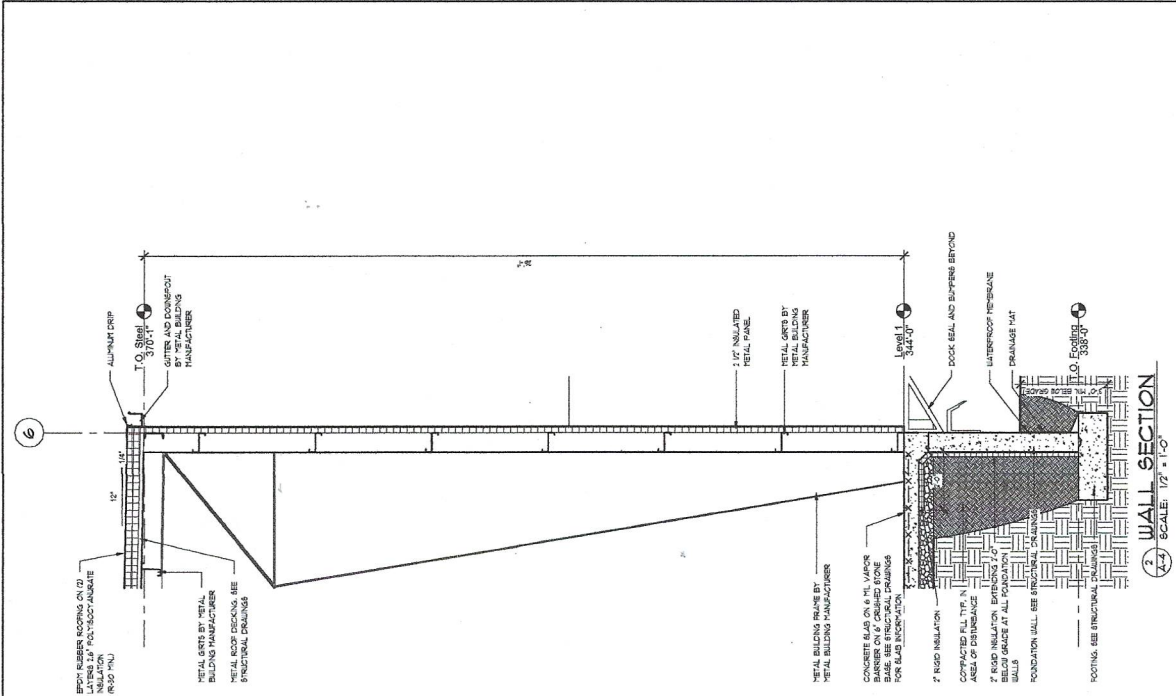


1 BUILDING SECTION  
SCALE: 1/4" = 1'-0"



2 EXTERIOR WALL SHEATHING NAILING  
SCALE: 1/2" = 1'-0"

<p>PROJECT PHASE: PERMITTING AS NOTED 12.02.2021</p>		<p>JOB NO: 2134</p>
<p>CONTRACTOR SHALL OBTAIN ALL NECESSARY PERMITS AND INSURE WORKER'S COMPENSATION BEFORE BEGINNING WORK.</p>		<p>DRAWING NO: A-3</p>
<p><b>BUILDING SECTION, DETAIL</b> GUERIERA SPEC BUILDING</p>		
<p>901 SKEEP LEVEL ROAD DOWNTOWN, PA 19385</p>		
<p><b>Eldon R. Stoltzfus Architect</b> Architecture Planning Interior Design 2 South Decatur Street Shensburg, Pa 17979 Phone: (717) 291-5929 Fax: (717) 291-8053 Email: <a href="mailto:Architect@mrstoltzfus.com">Architect@mrstoltzfus.com</a></p>		
<p>THIS DRAWING IS AN INSTRUMENT OF SERVICE IS THE PROPERTY OF THE ARCHITECT AND MAY NOT BE REPRODUCED WITHOUT HIS PERMISSION AND UNLESS THE REPRODUCTION CARRIES THE NAME OF THE ARCHITECT.</p>		
REVISIONS:	REVISIONS:	



JOB NO. **2134**  
DRAWING NO. **A-4**

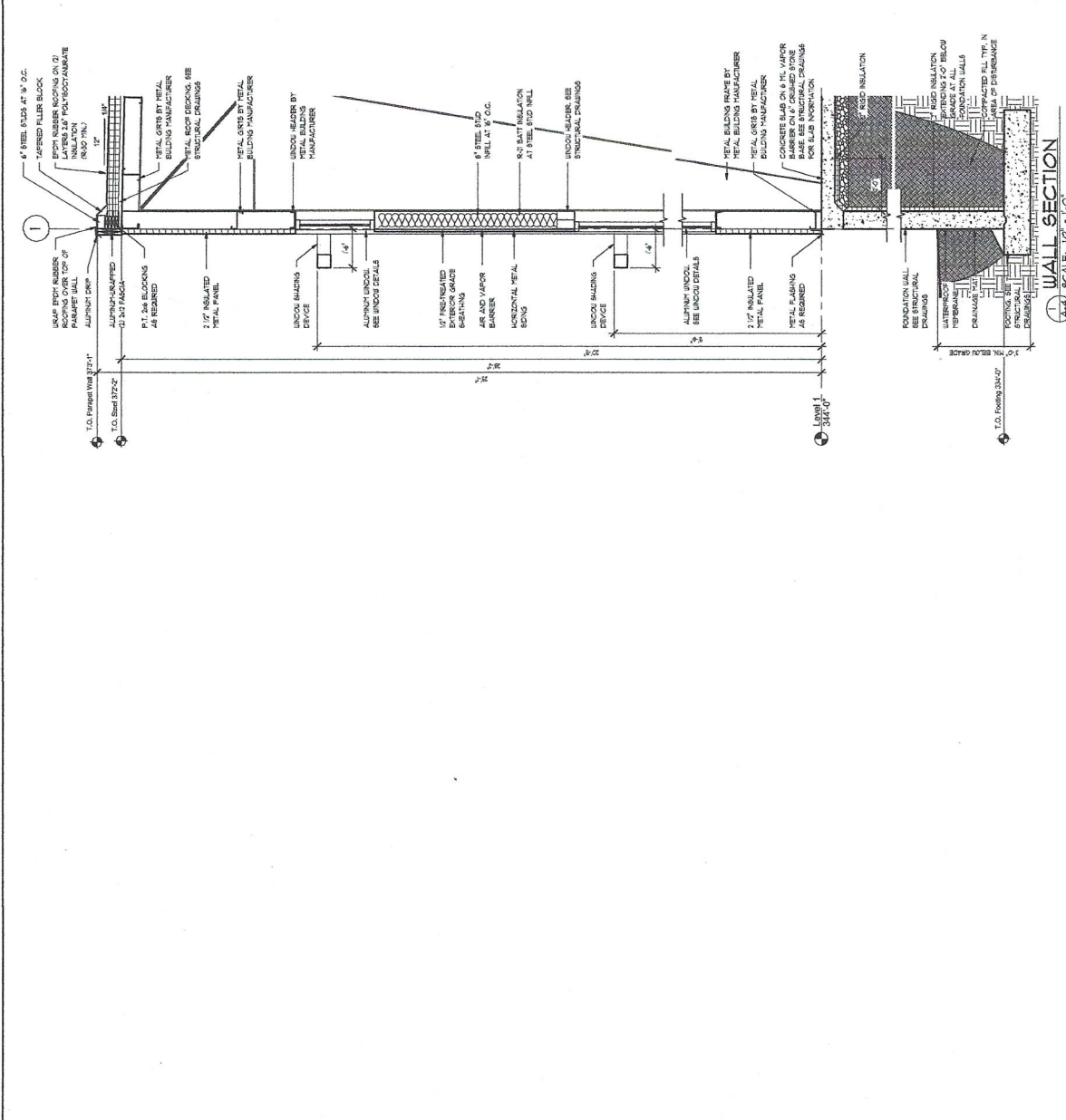
### WALL SECTIONS

#### GUERIERA SPEC BUILDING

901 SKELF LEVEL ROAD  
DOWNTOWN, PA 19395

DRAWN BY: PROJECT PHASE: PERMITTING  
DATE: 1-20-2023  
SCALE: 1/4" = 1'-0"

THE CONTRACTOR SHALL CHECK CONDITIONS IN PLACE AND MAKE ALL NECESSARY ADJUSTMENTS BEFORE BEGINNING WORK.



DRAWN BY: PROJECT PHASE: PERMITTING  
DATE: 1-20-2023  
SCALE: 1/4" = 1'-0"

### Eldon R. Stoltzfus Architect

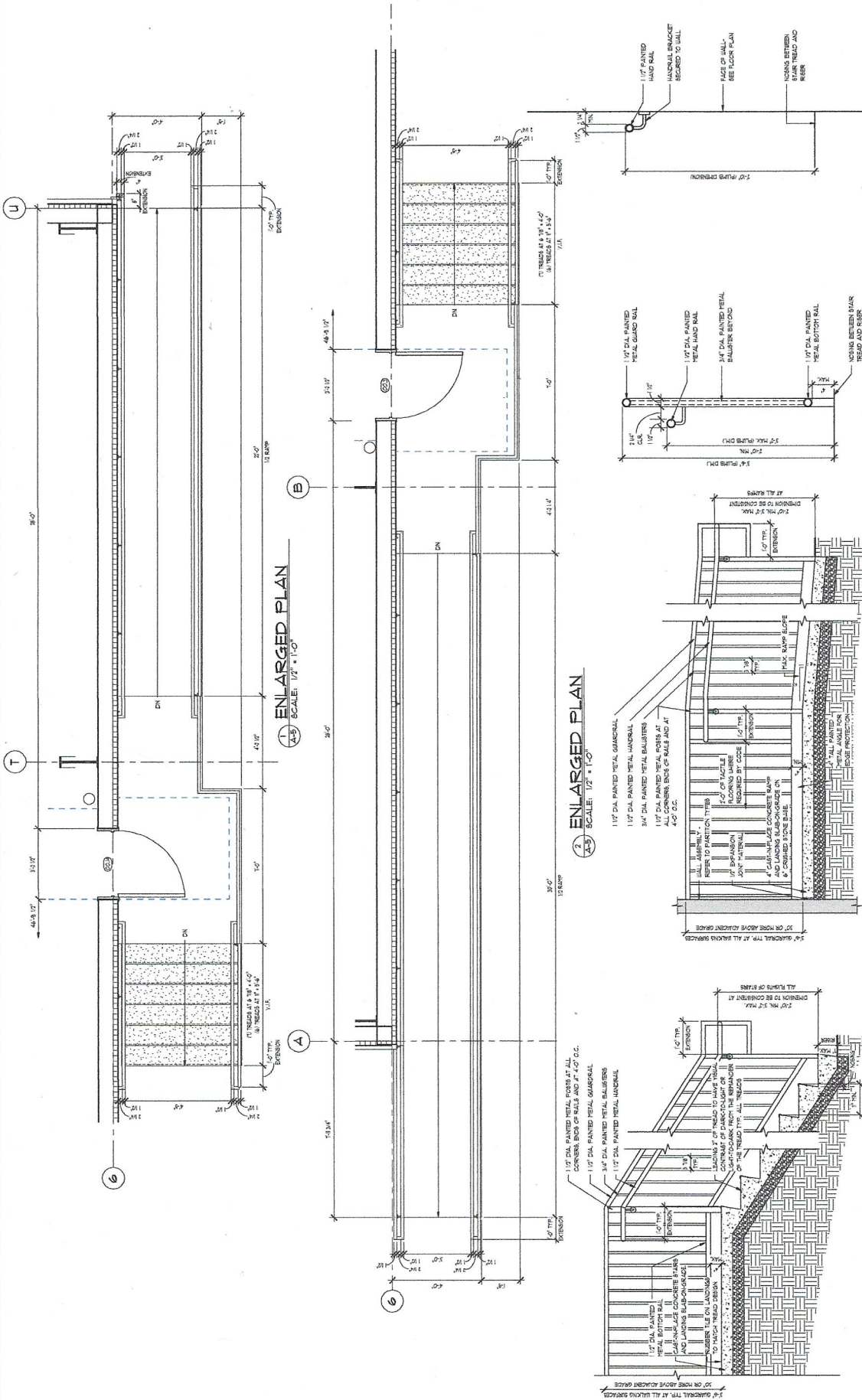
Architecture Planning Interior Design

2 South Decatur Street Shrewsbury, Pa 17379

Phone: (717) 291-5928 Fax: (717) 291-5953 Email: Architect@ersarchitect.com

THIS DRAWING AS AN INSTRUMENT OF SERVICE IS THE PROPERTY OF THE ARCHITECT AND MAY NOT BE REPRODUCED WITHOUT HIS PERMISSION AND UNLESS THE REPRODUCTION CARRIES HIS NAME AS THE ARCHITECT

NO.	REVISIONS



① **STAIR DETAIL**  
SCALE: 3/4" = 1'-0"

② **RAMP DETAIL**  
SCALE: 3/4" = 1'-0"

③ **ENLARGED PLAN**  
SCALE: 1/2" = 1'-0"

④ **HANDRAIL DETAIL**  
SCALE: 1/2" = 1'-0"

⑤ **WALL-MOUNTED HANDRAIL DETAIL**  
SCALE: 1/2" = 1'-0"

REVISIONS:

REVISIONS:



**Eldon R. Stoltzfus Architect**  
 Architecture Planning Interior Design  
 2 South Decatur Street Shrewsbury, Pa 17579  
 Phone: (717) 291-6928 Fax: (717) 291-6933 Email: Architect@wraarchitect.com

**PROJECT PHASE:**  
 DESIGN PERMITTING  
 DATE OF ISSUE: 1-22-2021  
 NO NOTED

**STAIR PLANS, DETAILS**  
**GUERIERA SPEC BUILDING**  
 901 SKEEP LEVEL ROAD  
 DOWNTOWN, PA 19335

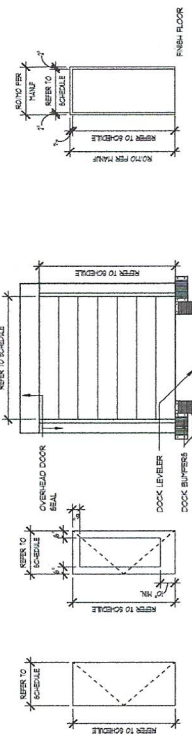
**JOB NO:** 2134  
**DRAWING NO:** A-5

THIS DRAWING IS AN INSTRUMENT OF SERVICE IS THE PROPERTY OF THE ARCHITECT AND MAY NOT BE REPRODUCED WITHOUT HIS PERMISSION AND UNLESS THE REPRODUCTION CARRIES HIS NAME AS THE ARCHITECT



Door Schedule				
MARK	DOOR TYPE	DOOR MATERIAL	DOOR SIZE	GLASS TYPE
Notes				
0001	D-B	ALUMINUM	3'-0" T x 7'-0" H	1/4" CLEAR TIPPED INSULATED
0002	D-B	ALUMINUM	3'-0" T x 7'-0" H	1/4" CLEAR TIPPED INSULATED
0003	D-C	ALUMINUM	3'-0" T x 7'-0" H	1/4" CLEAR TIPPED INSULATED
0004	D-C	ALUMINUM	3'-0" T x 7'-0" H	1/4" CLEAR TIPPED INSULATED
0005	D-C	ALUMINUM	3'-0" T x 7'-0" H	1/4" CLEAR TIPPED INSULATED
0006	D-C	ALUMINUM	3'-0" T x 7'-0" H	1/4" CLEAR TIPPED INSULATED
0007	D-C	ALUMINUM	3'-0" T x 7'-0" H	1/4" CLEAR TIPPED INSULATED
0008	D-C	ALUMINUM	3'-0" T x 7'-0" H	1/4" CLEAR TIPPED INSULATED
0009	D-C	ALUMINUM	3'-0" T x 7'-0" H	1/4" CLEAR TIPPED INSULATED
0010	D-C	ALUMINUM	3'-0" T x 7'-0" H	1/4" CLEAR TIPPED INSULATED
0011	D-C	ALUMINUM	3'-0" T x 7'-0" H	1/4" CLEAR TIPPED INSULATED
0012	D-C	ALUMINUM	3'-0" T x 7'-0" H	1/4" CLEAR TIPPED INSULATED
0013	D-C	ALUMINUM	3'-0" T x 7'-0" H	1/4" CLEAR TIPPED INSULATED
0014	D-C	ALUMINUM	3'-0" T x 7'-0" H	1/4" CLEAR TIPPED INSULATED
0015	D-C	ALUMINUM	3'-0" T x 7'-0" H	1/4" CLEAR TIPPED INSULATED
0016	D-C	ALUMINUM	3'-0" T x 7'-0" H	1/4" CLEAR TIPPED INSULATED
0017	D-C	ALUMINUM	3'-0" T x 7'-0" H	1/4" CLEAR TIPPED INSULATED
0018	D-C	ALUMINUM	3'-0" T x 7'-0" H	1/4" CLEAR TIPPED INSULATED
0019	D-C	ALUMINUM	3'-0" T x 7'-0" H	1/4" CLEAR TIPPED INSULATED
0020	D-C	ALUMINUM	3'-0" T x 7'-0" H	1/4" CLEAR TIPPED INSULATED
0021	D-C	ALUMINUM	3'-0" T x 7'-0" H	1/4" CLEAR TIPPED INSULATED
0022	D-C	ALUMINUM	3'-0" T x 7'-0" H	1/4" CLEAR TIPPED INSULATED
0023	D-C	ALUMINUM	3'-0" T x 7'-0" H	1/4" CLEAR TIPPED INSULATED
0024	D-C	ALUMINUM	3'-0" T x 7'-0" H	1/4" CLEAR TIPPED INSULATED
0025	D-C	ALUMINUM	3'-0" T x 7'-0" H	1/4" CLEAR TIPPED INSULATED
0026	D-C	ALUMINUM	3'-0" T x 7'-0" H	1/4" CLEAR TIPPED INSULATED
0027	D-C	ALUMINUM	3'-0" T x 7'-0" H	1/4" CLEAR TIPPED INSULATED
0028	D-C	ALUMINUM	3'-0" T x 7'-0" H	1/4" CLEAR TIPPED INSULATED
0029	D-C	ALUMINUM	3'-0" T x 7'-0" H	1/4" CLEAR TIPPED INSULATED
0030	D-C	ALUMINUM	3'-0" T x 7'-0" H	1/4" CLEAR TIPPED INSULATED
0031	D-C	ALUMINUM	3'-0" T x 7'-0" H	1/4" CLEAR TIPPED INSULATED
0032	D-C	ALUMINUM	3'-0" T x 7'-0" H	1/4" CLEAR TIPPED INSULATED
0033	D-C	ALUMINUM	3'-0" T x 7'-0" H	1/4" CLEAR TIPPED INSULATED
0034	D-C	ALUMINUM	3'-0" T x 7'-0" H	1/4" CLEAR TIPPED INSULATED
0035	D-C	ALUMINUM	3'-0" T x 7'-0" H	1/4" CLEAR TIPPED INSULATED
0036	D-C	ALUMINUM	3'-0" T x 7'-0" H	1/4" CLEAR TIPPED INSULATED
0037	D-C	ALUMINUM	3'-0" T x 7'-0" H	1/4" CLEAR TIPPED INSULATED
0038	D-C	ALUMINUM	3'-0" T x 7'-0" H	1/4" CLEAR TIPPED INSULATED
0039	D-C	ALUMINUM	3'-0" T x 7'-0" H	1/4" CLEAR TIPPED INSULATED
0040	D-C	ALUMINUM	3'-0" T x 7'-0" H	1/4" CLEAR TIPPED INSULATED
0041	D-C	ALUMINUM	3'-0" T x 7'-0" H	1/4" CLEAR TIPPED INSULATED
0042	D-C	ALUMINUM	3'-0" T x 7'-0" H	1/4" CLEAR TIPPED INSULATED
0043	D-C	ALUMINUM	3'-0" T x 7'-0" H	1/4" CLEAR TIPPED INSULATED
0044	D-C	ALUMINUM	3'-0" T x 7'-0" H	1/4" CLEAR TIPPED INSULATED
0045	D-C	ALUMINUM	3'-0" T x 7'-0" H	1/4" CLEAR TIPPED INSULATED
0046	D-C	ALUMINUM	3'-0" T x 7'-0" H	1/4" CLEAR TIPPED INSULATED
0047	D-C	ALUMINUM	3'-0" T x 7'-0" H	1/4" CLEAR TIPPED INSULATED
0048	D-C	ALUMINUM	3'-0" T x 7'-0" H	1/4" CLEAR TIPPED INSULATED
0049	D-C	ALUMINUM	3'-0" T x 7'-0" H	1/4" CLEAR TIPPED INSULATED
0050	D-C	ALUMINUM	3'-0" T x 7'-0" H	1/4" CLEAR TIPPED INSULATED
0051	D-C	ALUMINUM	3'-0" T x 7'-0" H	1/4" CLEAR TIPPED INSULATED
0052	D-C	ALUMINUM	3'-0" T x 7'-0" H	1/4" CLEAR TIPPED INSULATED
0053	D-C	ALUMINUM	3'-0" T x 7'-0" H	1/4" CLEAR TIPPED INSULATED
0054	D-C	ALUMINUM	3'-0" T x 7'-0" H	1/4" CLEAR TIPPED INSULATED
0055	D-C	ALUMINUM	3'-0" T x 7'-0" H	1/4" CLEAR TIPPED INSULATED
0056	D-C	ALUMINUM	3'-0" T x 7'-0" H	1/4" CLEAR TIPPED INSULATED
0057	D-C	ALUMINUM	3'-0" T x 7'-0" H	1/4" CLEAR TIPPED INSULATED
0058	D-C	ALUMINUM	3'-0" T x 7'-0" H	1/4" CLEAR TIPPED INSULATED
0059	D-C	ALUMINUM	3'-0" T x 7'-0" H	1/4" CLEAR TIPPED INSULATED
0060	D-C	ALUMINUM	3'-0" T x 7'-0" H	1/4" CLEAR TIPPED INSULATED

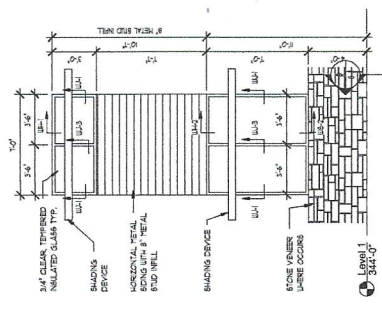
**LEGEND:**  
 1/4" HOLLOW METAL  
 1/4" INSULATED HOLLOW METAL  
**GLASS TYPES:**  
 TYPE 1: 1/4" CLEAR TIPPED INSULATED  
 TYPE 2: 1/4" CLEAR TIPPED  
**DOOR AND DOOR FRAME NOTES:**  
 1. ALL DOOR HARDWARE INCLUDING DOOR DRIVES FINE DET. SHALL BE PROVIDED BY THE MANUFACTURER AND SHALL MEET THE REQUIREMENTS OF COGNATE JETI AND THE AMERICAN NATIONAL STANDARDS FOR HARDWARE.  
 2. ALL DOORS TO BE EQUIPPED WITH PANIC HARDWARE.



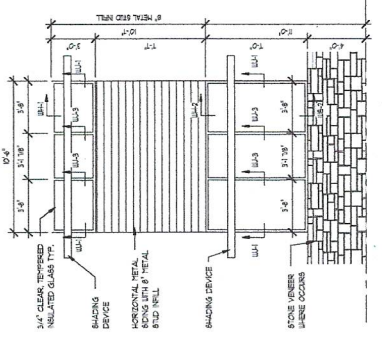
**FRAME DETAIL**  
 SCALE: 1/4" = 1'-0"

**DOOR TYPES**  
 SCALE: 1/4" = 1'-0"

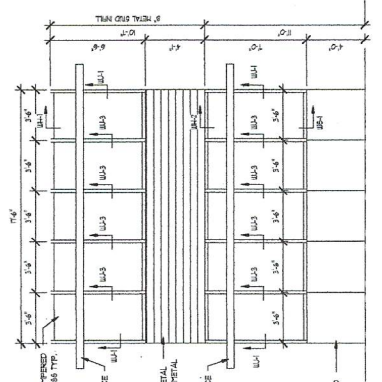
NOTE: DIMENSIONS TO GLAZING ARE TO CLEAR GLAZING AND NOT TO GLAZING FRAME



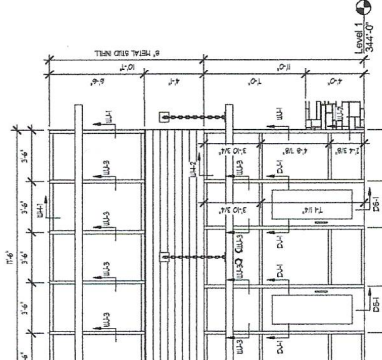
**1'-0" WIDE WINDOW DETAIL**  
 SCALE: 1/4" = 1'-0"



**10'-6" WIDE WINDOW DETAIL**  
 SCALE: 1/4" = 1'-0"

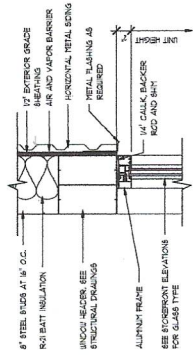


**17'-6" WIDE WINDOW DETAIL**  
 SCALE: 1/4" = 1'-0"

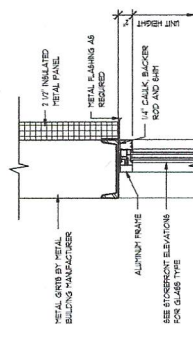


**ENTRY DETAIL**  
 SCALE: 1/4" = 1'-0"

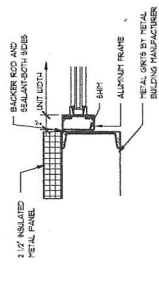
REVISIONS:  	REVISIONS:  		<b>Eldon R. Stoltzfus Architect</b> Architecture Planning Interior Design 2 South Director Street Shrewsbury, Pa 17379 Phone: (717) 291-6928 Fax: (717) 291-6923 Email: Architect@ersarchitect.com	JOB NO. <b>2134</b>
			THE CONTRACTOR SHALL CHECK CONDITIONS IN PLACE BEFORE PROCEEDING WITH ANY NECESSARY DIMENSIONS TO ENSURE PROPER FINISH WORK.	DRAWING NO. <b>A-6</b>
<b>DOOR, WINDOW INFORMATION</b> <b>GUERIERA SPEC BUILDING</b> 901 SLEEP LEVEL ROAD DOWNTOWN, PA 19339			DRAWN BY: C.T.P.	PROJECT PHASE: PERMITTING
DATE: 1/25/2021			SCALE: AS SHOWN	DATE: 1/25/2021



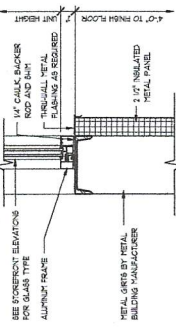
WH-2  
SCALE: 1/12" = 1'-0"



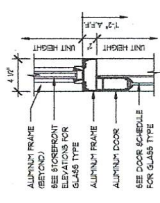
WH-1  
SCALE: 1/12" = 1'-0"



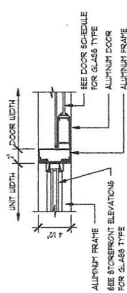
WJ-1  
SCALE: 1/12" = 1'-0"



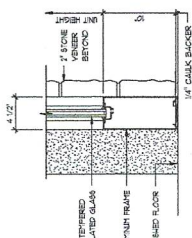
WS-1  
SCALE: 1/12" = 1'-0"



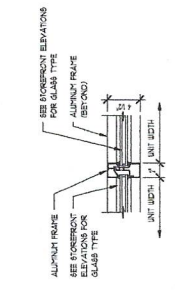
DH-1  
SCALE: 1/12" = 1'-0"



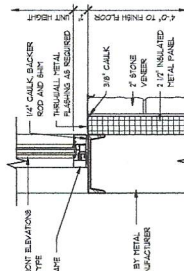
DJ-1  
SCALE: 1/12" = 1'-0"



DS-1  
SCALE: 1/12" = 1'-0"



WJ-3  
SCALE: 1/12" = 1'-0"



WS-2  
SCALE: 1/12" = 1'-0"

REVISIONS:


REVISIONS:

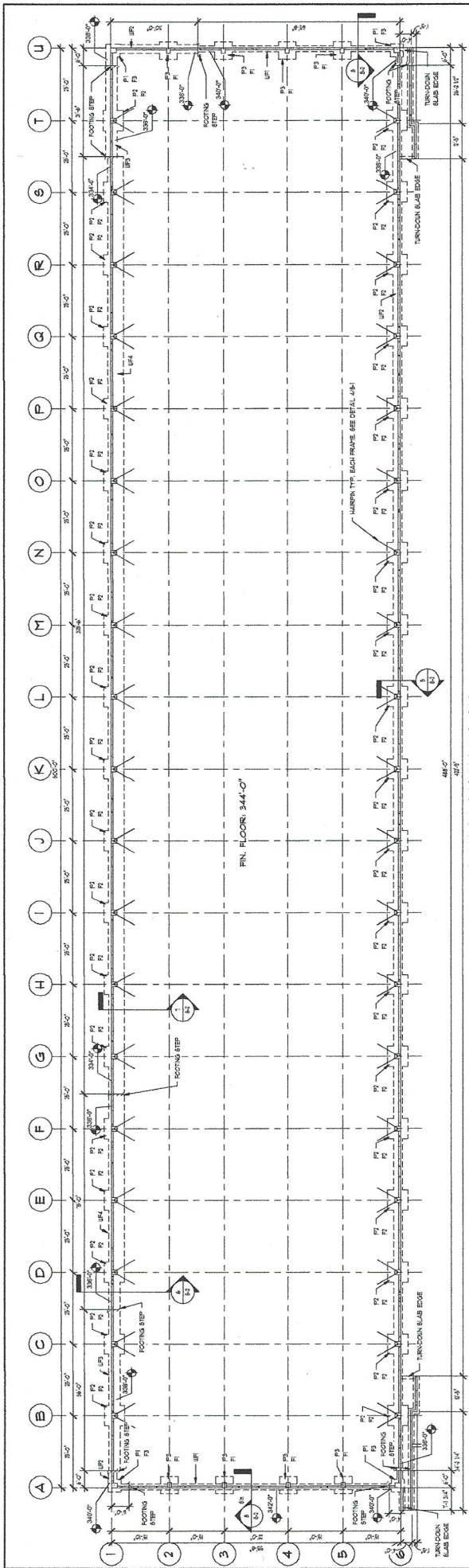

**Eldon R. Stoltzfus Architect**  
 Architecture Planning Interior Design  
 2 Sixth Decatur Street  
 Shrewsbury, Pa 17599  
 Phone: (717) 291-5029 Fax: (717) 291-5055 Email: Architect@ersarchitect.com

THIS DRAWING AS AN INSTRUMENT OF SERVICE IS THE PROPERTY OF THE ARCHITECT AND MAY NOT BE REPRODUCED WITHOUT HIS PERMISSION AND UNLESS THE REPRODUCTION CARRIES HIS NAME AS THE ARCHITECT

PROJECT PHASE:  
 PERMITTING  
 DATE: 12-09-2021

CHECK CONDITIONS AT PLZ  
 ALL WORK TO BE COMPLETED BEFORE BEGINNING WORK

**DOOR, WINDOW DETAILS**  
**GUERIERA SPEC BUILDING**  
 901 SHELPE LEVEL ROAD  
 DOWNTOWN, PA 19335

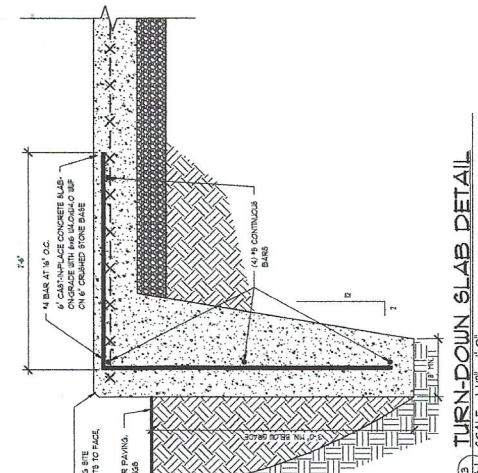
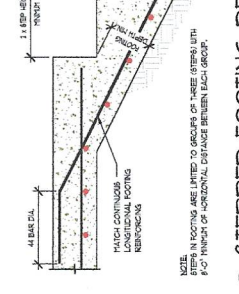
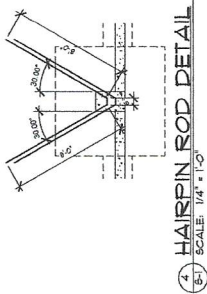


1 FOUNDATION PLAN  
SCALE: 1/8" = 1'-0"

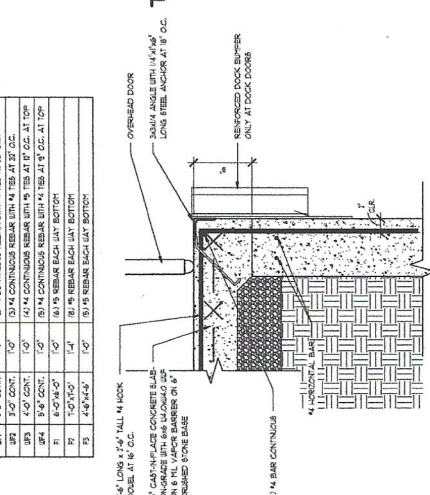
MARK	SIZE	REINFORCEMENT	REMARKS
1	2'-0" CONT.	10"	10" x 14" CONTINUOUS REBAR WITH #4 TIE AT 20" O.C.
2	3'-0" CONT.	10"	10" x 14" CONTINUOUS REBAR WITH #4 TIE AT 20" O.C.
3	4'-0" CONT.	10"	10" x 14" CONTINUOUS REBAR WITH #4 TIE AT 20" O.C. AT TOP
4	5'-0" CONT.	10"	10" x 14" CONTINUOUS REBAR WITH #4 TIE AT 20" O.C. AT TOP
5	6'-0" CONT.	10"	10" x 14" CONTINUOUS REBAR WITH #4 TIE AT 20" O.C. AT TOP
6	7'-0" CONT.	10"	10" x 14" CONTINUOUS REBAR WITH #4 TIE AT 20" O.C. AT TOP

**STRUCTURAL NOTES:**

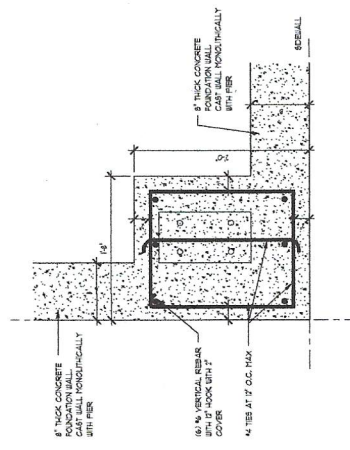
- LOADING NOTES:**
  - SEE FLOOR LOADINGS BY ARCHITECT FOR DESIGN LOADS.
- FOUNDATION NOTES:**
  - REMOVE ALL ORGANIC MATERIAL, EXCESSIVE SOFT OR LOOSE SOIL, DEBRIS, AND CONCRETE ON OTHER BEAMS WITHIN THE LIMITS OF THE FOUNDATIONS.
  - USE QUARTZ GRANULAR SOILS FOR FILL. PLACE ALL FILLS IN 6" LIFTS. COMPACT TO 95% OF STANDARD PROCTOR TEST TO 30" THICKNESS. VERIFY PER ASTM D-1585 BY STANDARD PROCTOR TEST.
  - FOUNDATIONS ARE PERMANENTLY BUILT ON A PRESUMPTIVE ALLOWABLE BEARING CAPACITY OF 3,000 PSF PER TABLE 302.2.
- CONCRETE NOTES:**
  - CONDUCT ALL CONCRETE WORK IN ACCORDANCE WITH THE 2014 EDITION OF ACI 308.
  - PROVIDE THE FOLLOWING CONCRETE COVER ON REINFORCEMENT BARS EXCEPT AS NOTED:
    - CONCRETE CAST AGAINST AND PERMANENTLY EXPOSED TO EARTH, 3"
    - CONCRETE EXPOSED TO WEATHER, 2"
    - 4" BARS OR LARGER, 2"
  - USE CONCRETE WITH COMPRESSIVE STRENGTH AT 28 DAYS AS FOLLOWS:
    - FOUNDATIONS AND WALLS: 4,000 PSI
    - SLABS: 4,000 PSI
  - THE CONTRACTOR MAY ELECT TO SUBSTITUTE A HIGHER STRENGTH CONCRETE FOR A LOWER ONE AT NO ADDITIONAL COST TO THE OWNER.
  - CHAMFER EXPOSED CONCRETE EDGES 1" BY 1" EXCEPT AS NOTED.
  - PROVIDE GRADE AND REINFORCEMENT BARS THAT MEET THE REQUIREMENTS OF ASTM A 631, A 631A, A 631B, A 631C, A 631D, A 631E, A 631F, AND A 631G.
  - BEAMS OF REINFORCED CONCRETE BEAMS DURING FABRICATION OR CONSTRUCTION IS NOT PERMITTED.
  - PROVIDE MINIMUM LAP AND PRELAP LENGTH OF #4 BARS EXCEPT AS NOTED IN ACCORDANCE WITH ACI 308. UNIFORMITY OF GRADE.
  - RAKER/SHALL-HORIZONTAL CONSTRUCTION JOINTS EXCEPT AS NOTED.



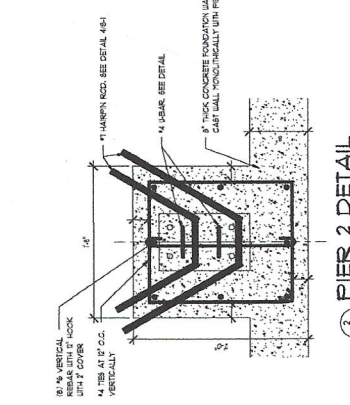
2 O.H. DOOR SLAB DETAIL  
SCALE: 1/2" = 1'-0"



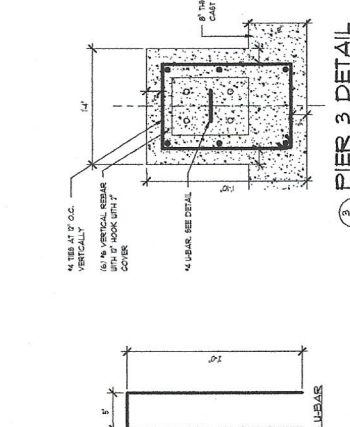
JOB NO. 2134		FOUNDATION PLAN, DETAILS <b>GUERIERA SPEC BUILDING</b> 901 SHELVE LEVEL ROAD DOWNTOWN, PA 19335
DRAWING NO. S-1		
DRAWN BY: [blank] E.T.P. [blank] SCALE: [blank] AS NOTED: 1-2008-2021	PROJECT PHASE: PERMITTING DATE: 1-2008-2021	THE CONTRACTOR SHALL CHECK CONDITIONS IN PLACE AND ACCORDANT DIMENSIONS BEFORE BEGINNING WORK.
<b>JOHN RUFF, RUFF ENGINEERING</b> Eldon R. Stoltzfus Architect Architecture Planning Interior Design 2 South Decatur Street Shrewsbury, Pa 17579 Phone: (717) 291-5928 Fax: (717) 291-9053 Email: Architect@ersarchitect.com		
THIS DRAWING IS AN INSTRUMENT OF SERVICE IS THE PROPERTY OF THE ARCHITECT AND MAY NOT BE REPRODUCED WITHOUT HIS PERMISSION AND UNLESS THE REPRODUCTION CARRIES HIS NAME AS THE ARCHITECT.		
REVISIONS:	REVISIONS:	



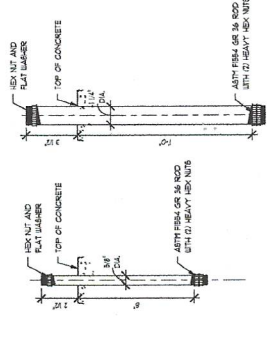
1 PIER 1 DETAIL  
SCALE: 1/4" = 1'-0"



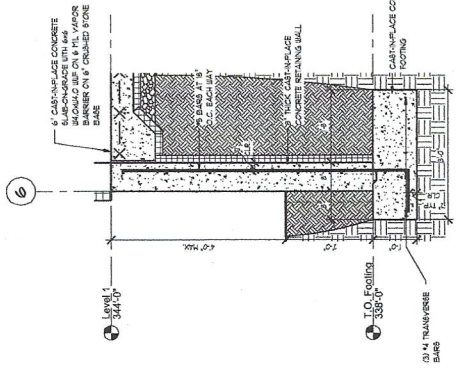
2 PIER 2 DETAIL  
SCALE: 1/4" = 1'-0"



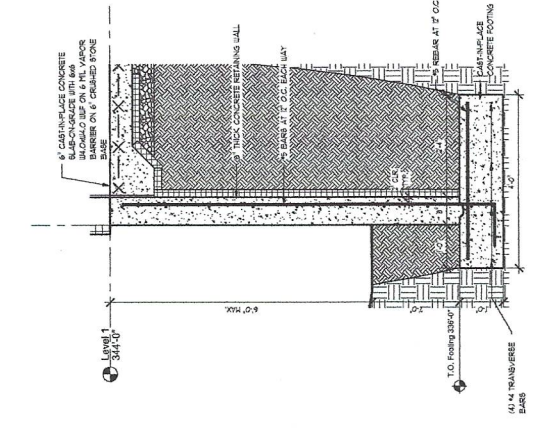
3 PIER 3 DETAIL  
SCALE: 1/4" = 1'-0"



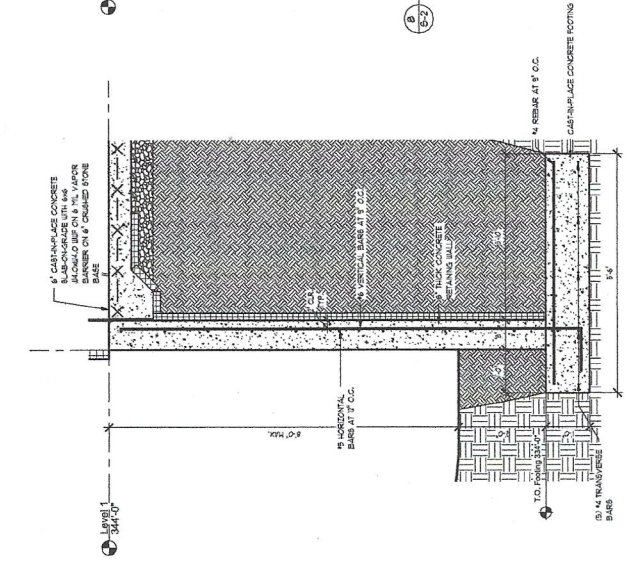
4 ANCHOR BOLT DETAILS  
SCALE: 3/4" = 1'-0"



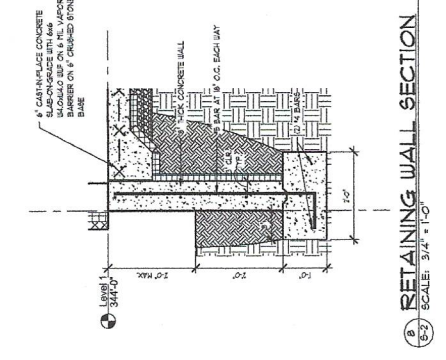
5 DOCK RETAINING WALL SECTION  
SCALE: 3/4" = 1'-0"



6 RETAINING WALL SECTION  
SCALE: 3/4" = 1'-0"

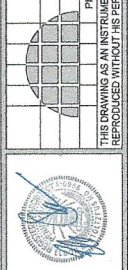


7 RETAINING WALL SECTION  
SCALE: 3/4" = 1'-0"



8 RETAINING WALL SECTION  
SCALE: 3/4" = 1'-0"

JOHN RUFF, RUFF ENGINEERING



**Eldon R. Stoltzfus Architect**  
Architecture Planning Interior Design  
2 South Decatur Street Sheshing, Pa. 17579  
Phone: (717) 291-6628 Fax: (717) 291-6623 Email: Architect@ersarchitect.com

THE CONTRACTOR SHALL CHECK CONDITIONS IN PLACE AND MAKE NECESSARY ADJUSTMENTS BEFORE BEGINNING WORK.

JOB NO.	2134
DRAWING NO.	S-2
PROJECT TITLE:	STRUCTURAL DETAILS
CLIENT:	GUERIERA SPEC BUILDING
DATE:	1-10-2021
PROJECT PERMITTING:	
SCALE:	
PROJECT LOCATION:	901 SHELPLEY ROAD DOWNTOWN, PA. 19389

NO.	REVISIONS: